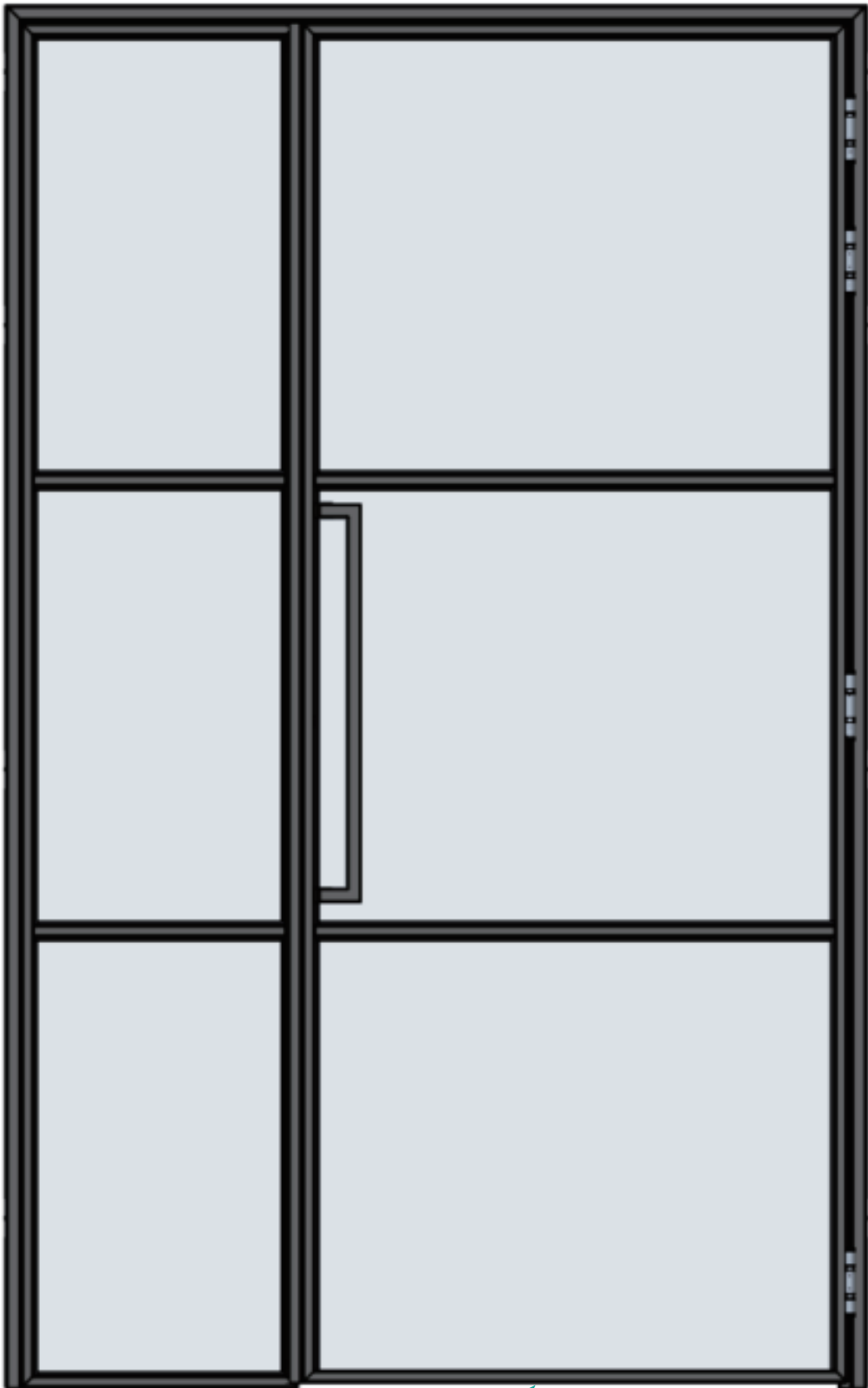


Double Door Sample



Fixed Panel

Swing Panel

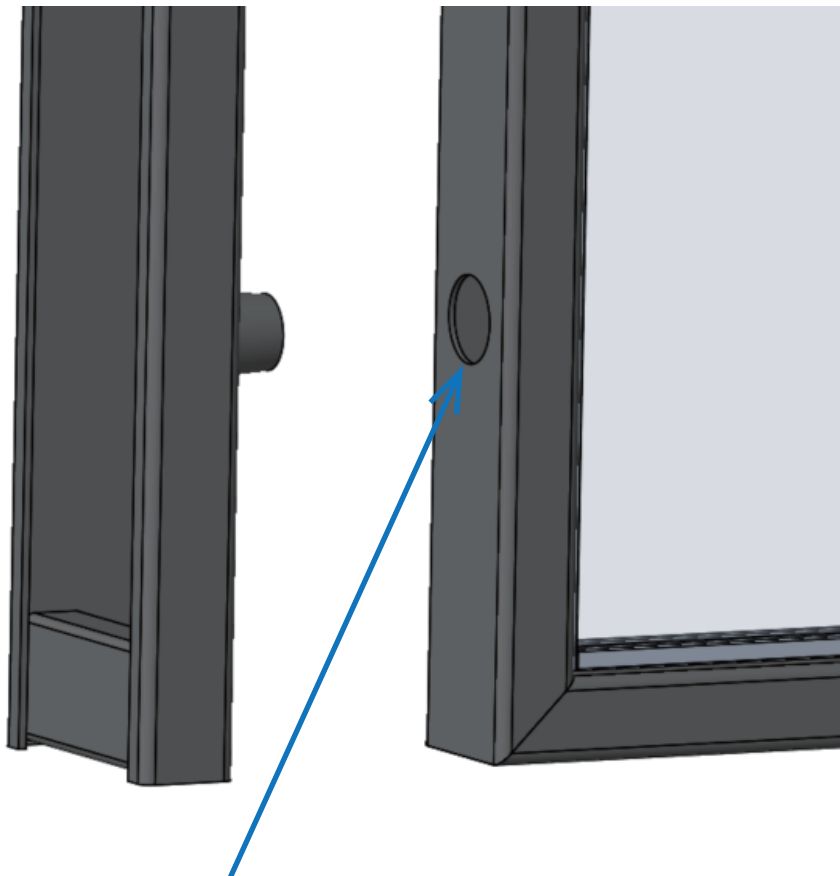
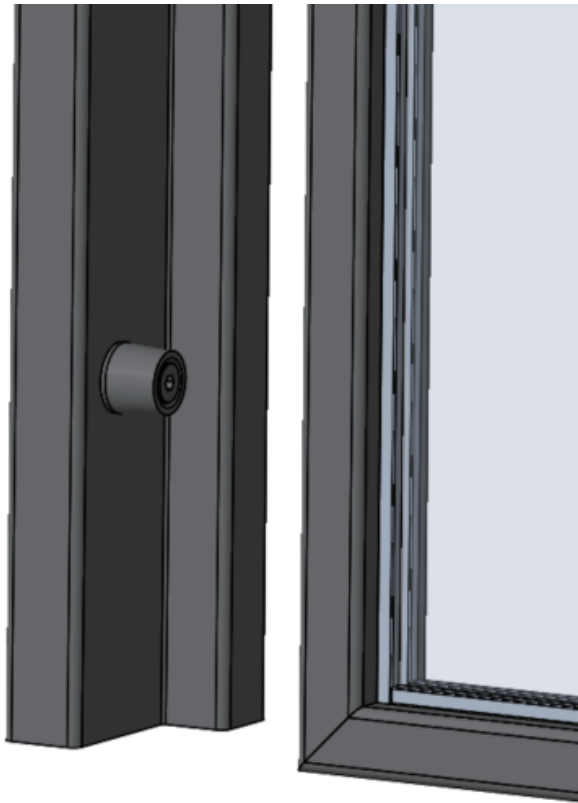


Fixed Panel sits on the floor

**Swing Panel with 8mm
clearance from the floor**

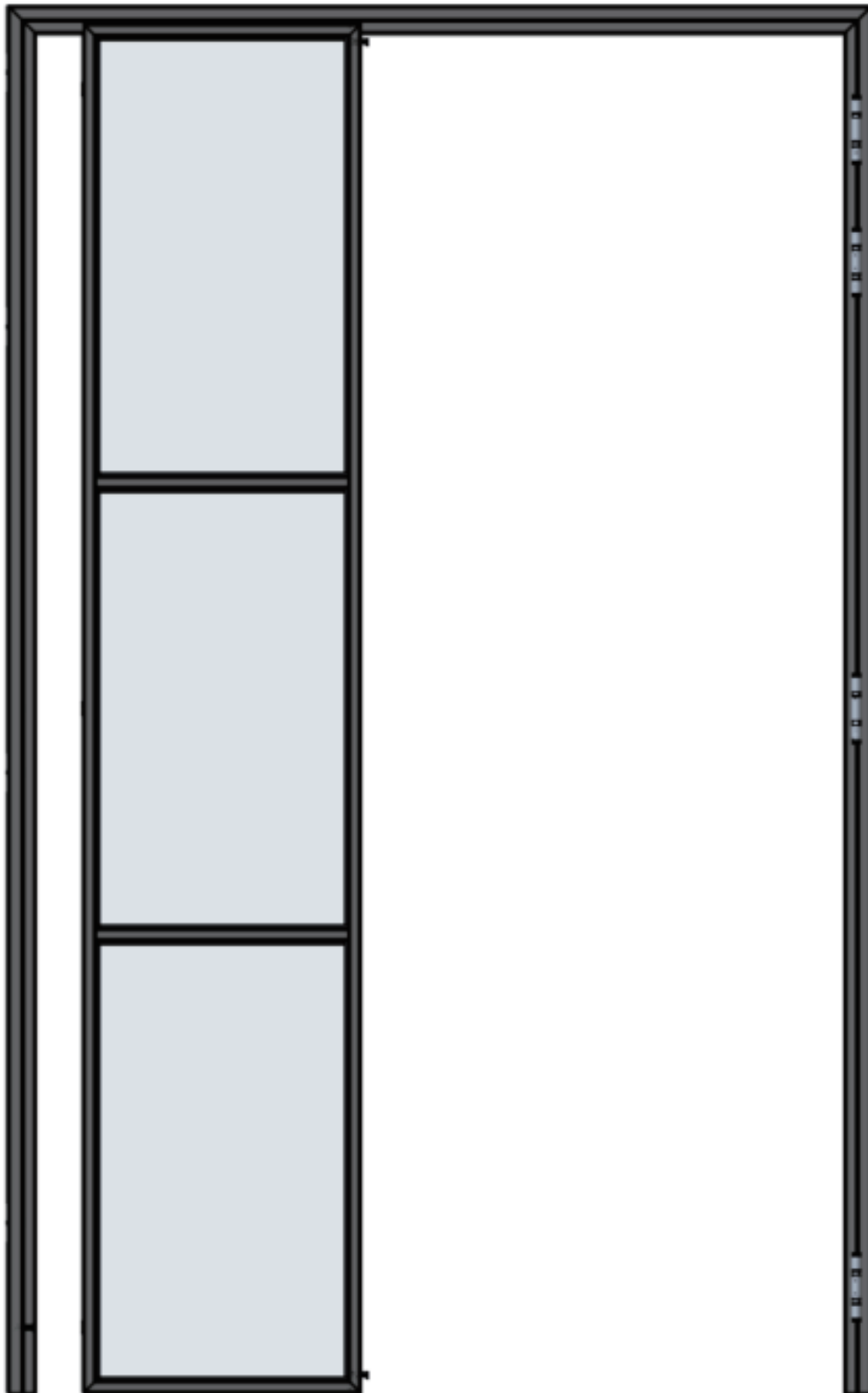


3 bulges on the frame to hold the fixed panel.



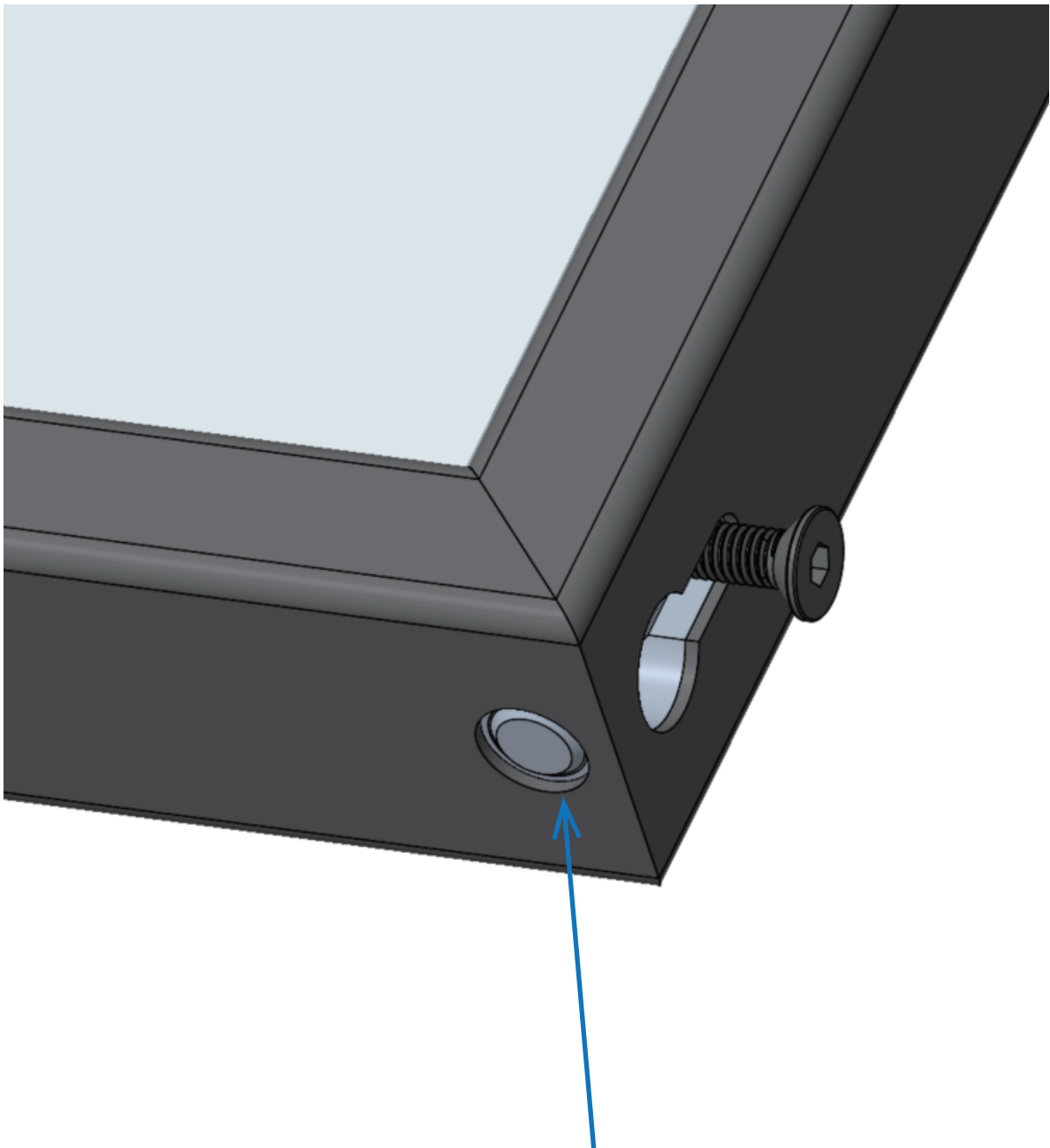
3 holes on the fixed panel.

After install the door frame, slide the fixed panel onto the frame.



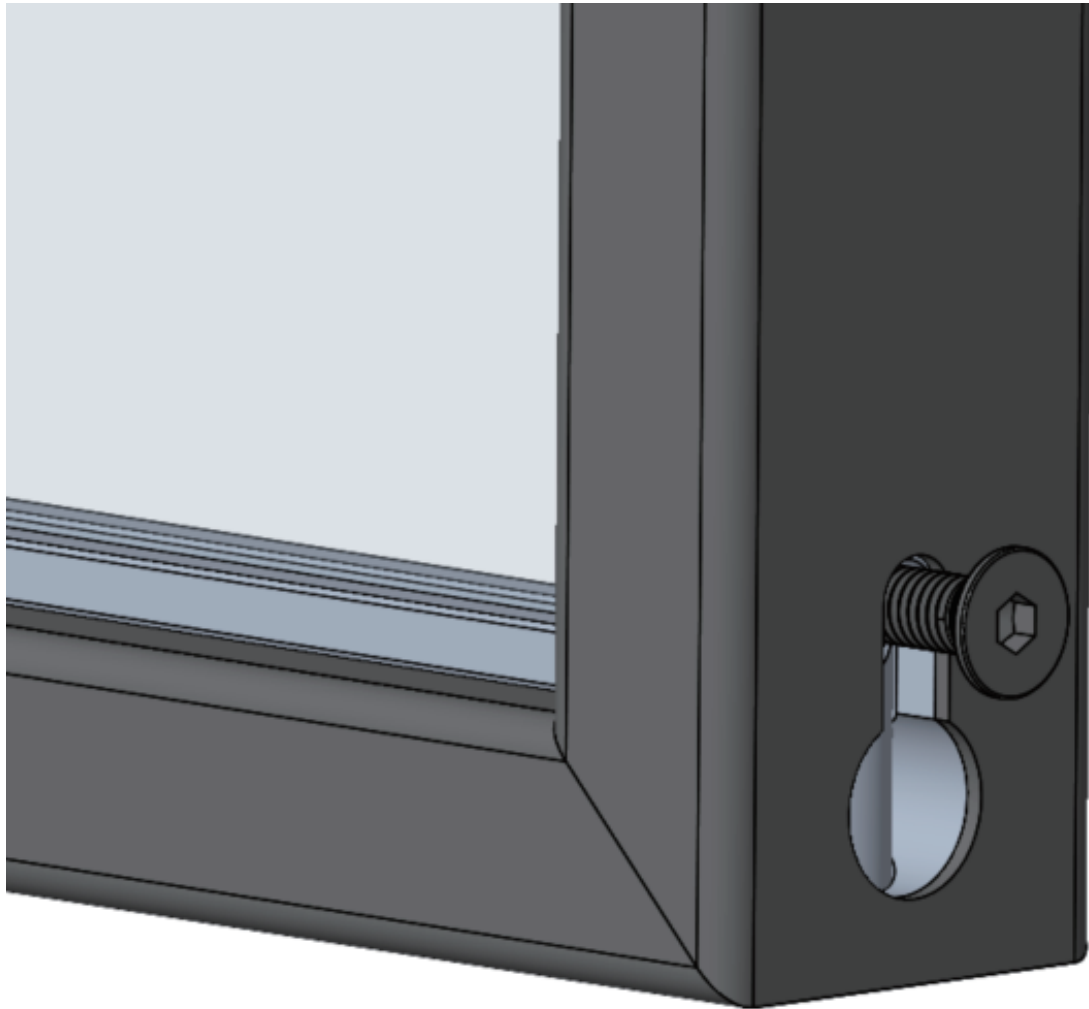
Slides In

On the other side of the fixed panel.
There are two pin-lock on the top and bottom.

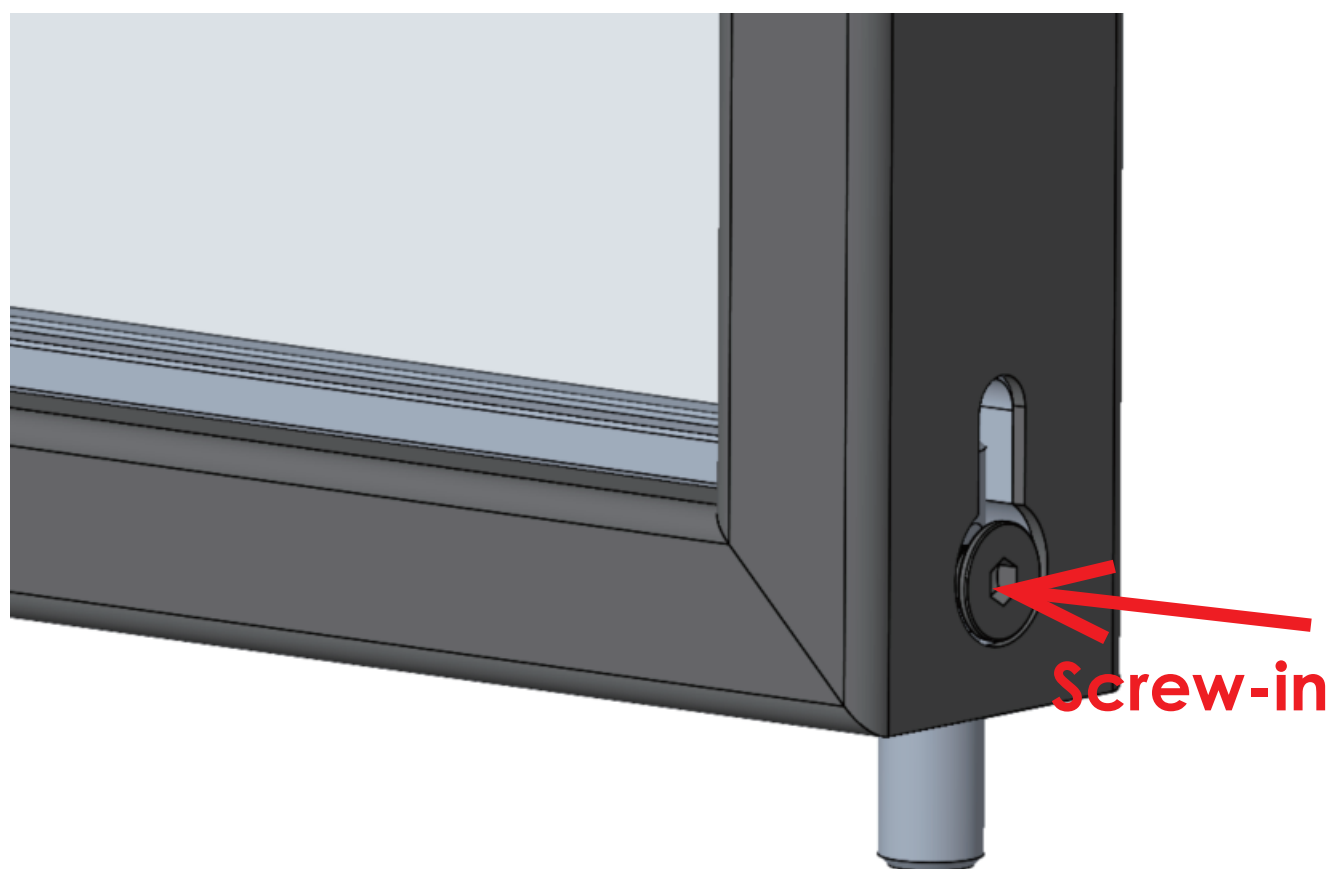
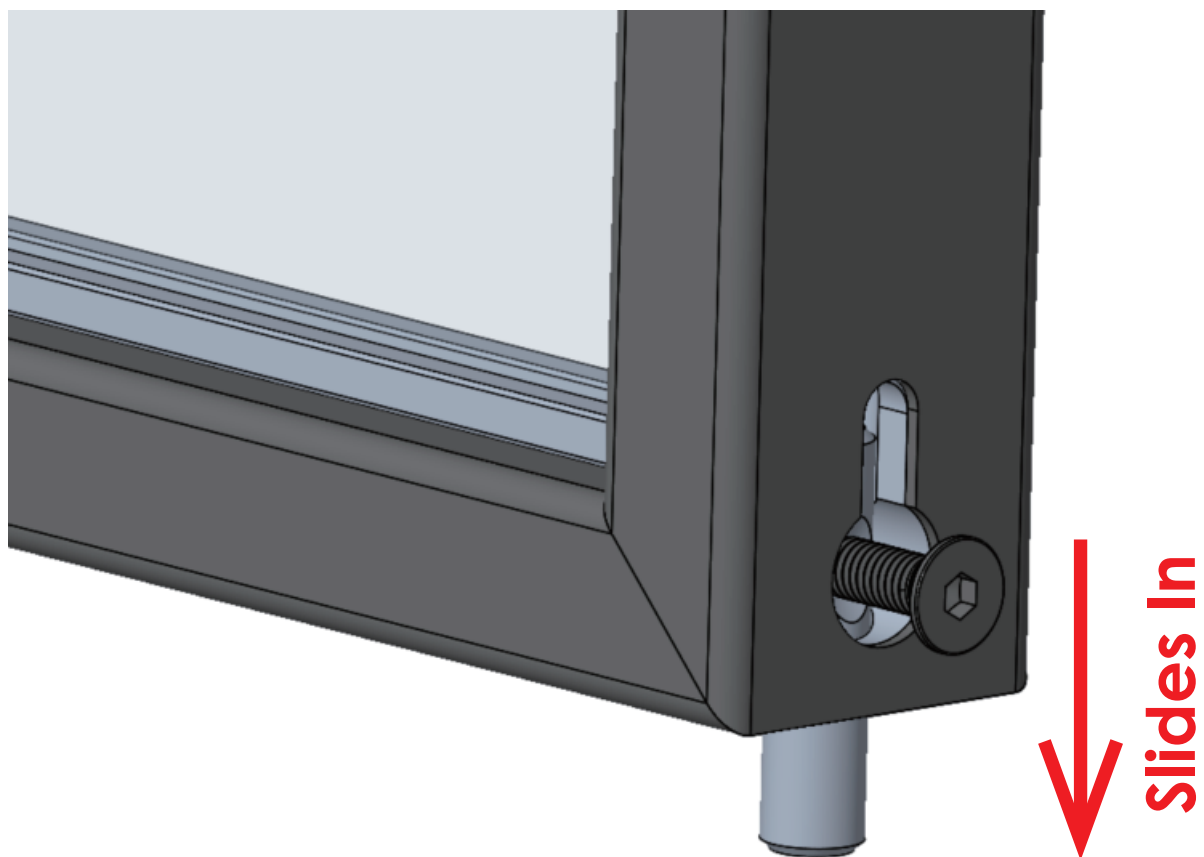


This is the pin lock in the panel.
One on top and one on the bottom.

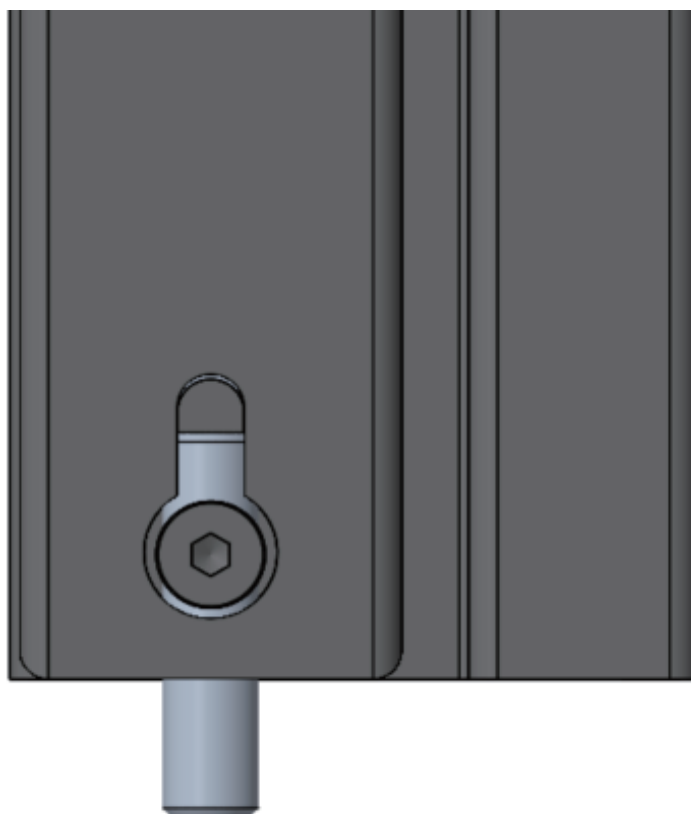
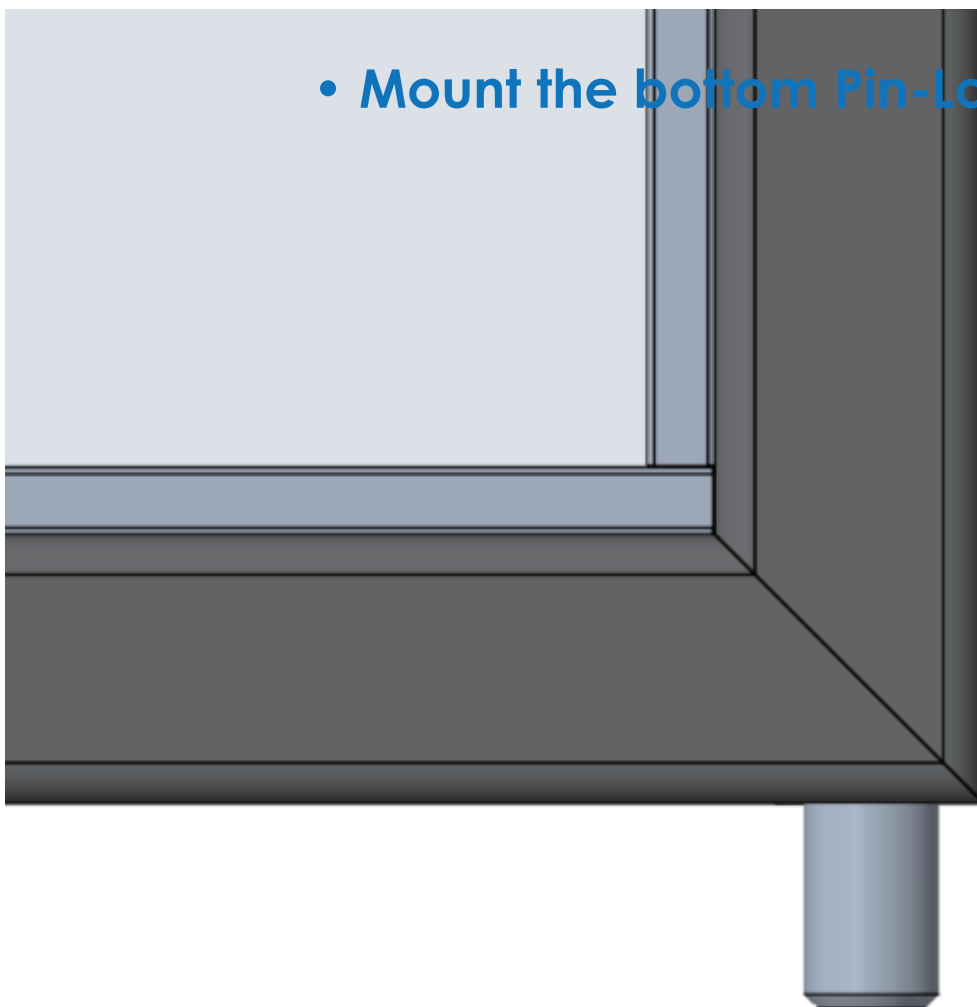
- **Mount the bottom Pin-Lock**



For the bottom one, drill one hole on the floor and insert the pin to the floor then fix it with the bolt



- Mount the bottom Pin-Lock



- **Mount the Top Pin-Lock**

